



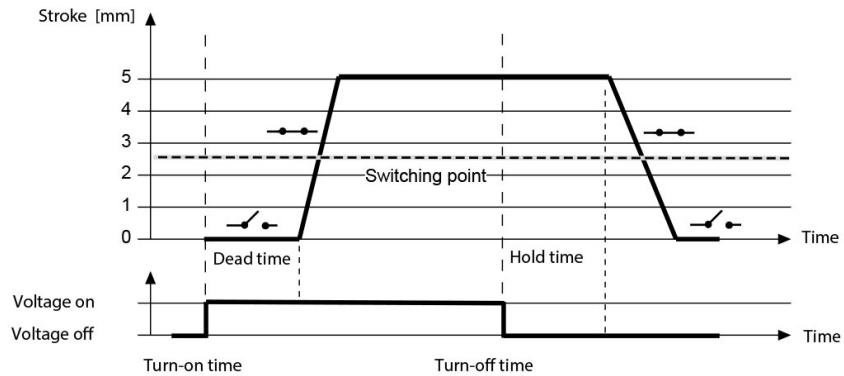
ACCESSORIES FOR MANIFOLDS

891M Electrothermal actuator

INSTRUCTIONS

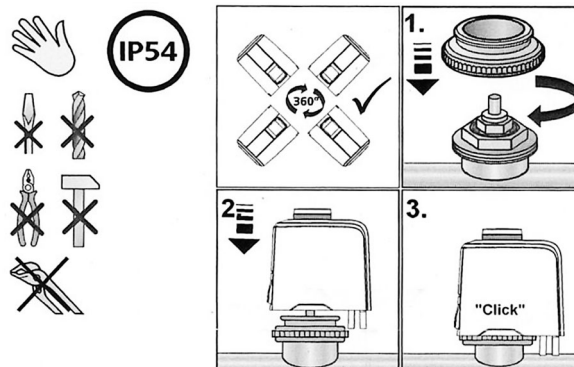
FUNCTION:

The actuator mechanism uses a PTC resistor-heated expansion unit and a compression spring. The expansion unit is heated by applying the operating voltage and moves the integrated plunger. The force generated by this movement is transferred to the plunger, thus opening the valve. The Function display shows whether the valve is open or closed; this can also be felt in the dark. The Function display extracts when the valve opens.



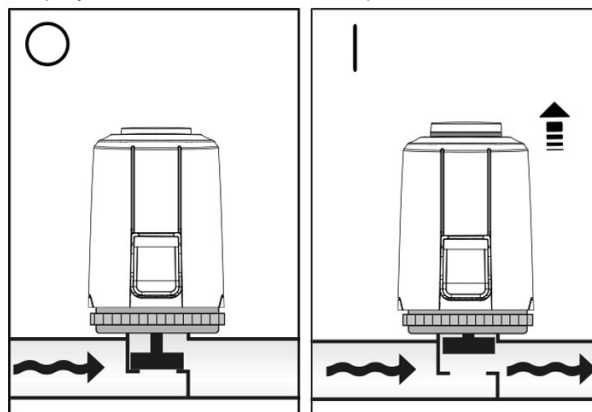
The valve is opened steadily by the plunger motion upon switching on the operating voltage and after expiry of the Dead time. After the operating voltage is cut and after expiry of the Hold time the valve is closed evenly by the closing force of the compression spring. The actuating force of the compression spring is matched to the actuating force of commercially available valves and keeps the NO valves closed when de-energized.

INSTALLATION:



DISPLAY FUNCTION:

The Function display is directly visible and shows whether the valve is open or closed; this can also be felt in the dark. Normally closed (NC): The Function display extracts when the valve opens.

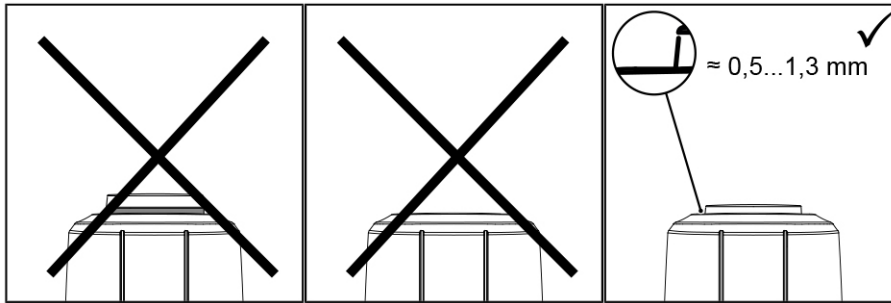


ADAPTATION CHECK:



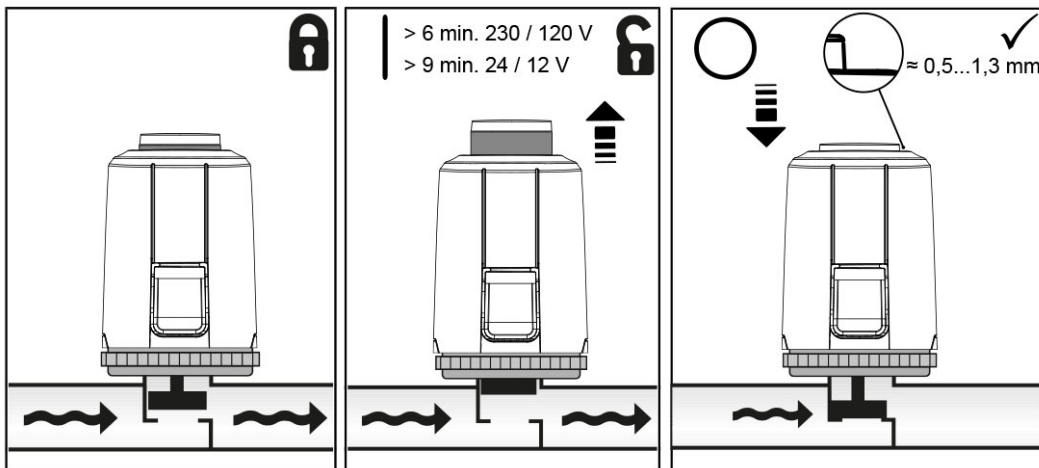
ACCESSORIES FOR MANIFOLDS

The adaptation of the actuator on the valve after mounting is displayed via the Function display. To do this, the drive plunger must move down to the closing point of the valve. In case of an actuator with First Open function, First-Open must be unlocked. The adjustment is visible depending on the position of the Function display.



FIRST OPEN FUNCTION:

All'acquisto, la funzione First Open consente all'attuatore di mantenere aperta la valvola NA senza corrente. La posizione iniziale all'acquisto dell'indicatore di funzione dell'attuatore è di circa 3 mm. Ciò consente il funzionamento del riscaldamento durante la fase di costruzione anche quando il cablaggio elettrico del sistema di termoregolazione ambiente per ambiente non è ancora completo. Durante la successiva messa in funzione, l'applicazione della tensione di esercizio (> 6 min. a 230 /120 V e > 9 min. a 24 /12 V) sblocca automaticamente la funzione di prima apertura e l'attuatore è completamente funzionante.

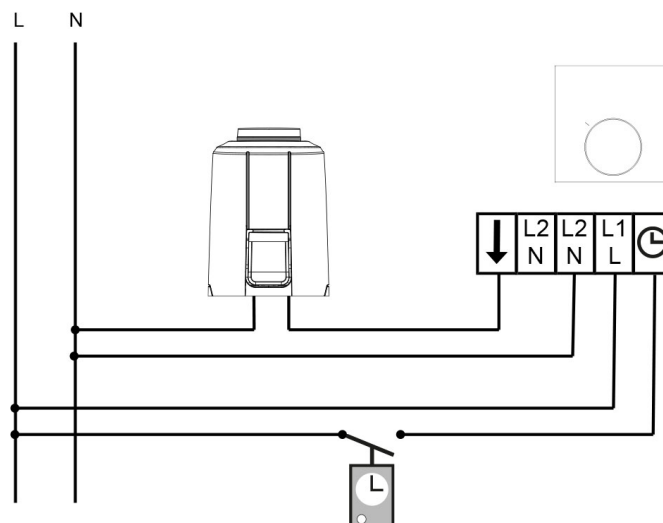


ELECTRICAL CONNECTION:

The following sheathed cables are recommended for the installation of the system: NYM 1.5 mm²

Electrical installation may only be carried out by authorised specialist personnel in accordance with current national regulations.

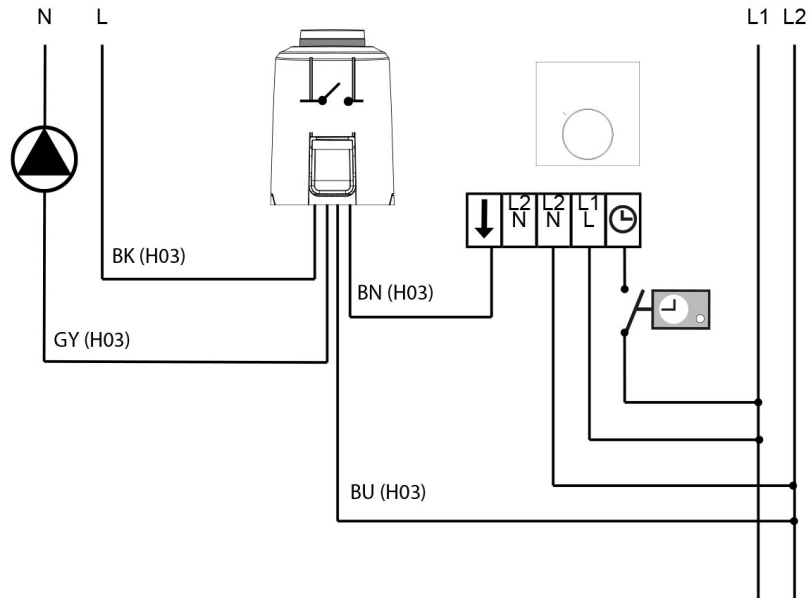
2-wire actuator:



4-wire actuator:



ACCESSORIES FOR MANIFOLDS



Wire colours:

BK: Black

GY: Grey

BN: Brown

BU: Blue

DISASSEMBLY:

